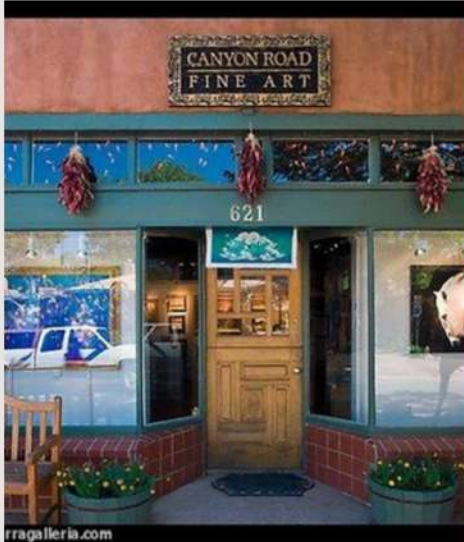


EXPERIENCE SANTA FE
CURATED EXCURSIONS
& SPECIAL EVENTS



TEXAS SOCIETY
of Medicine

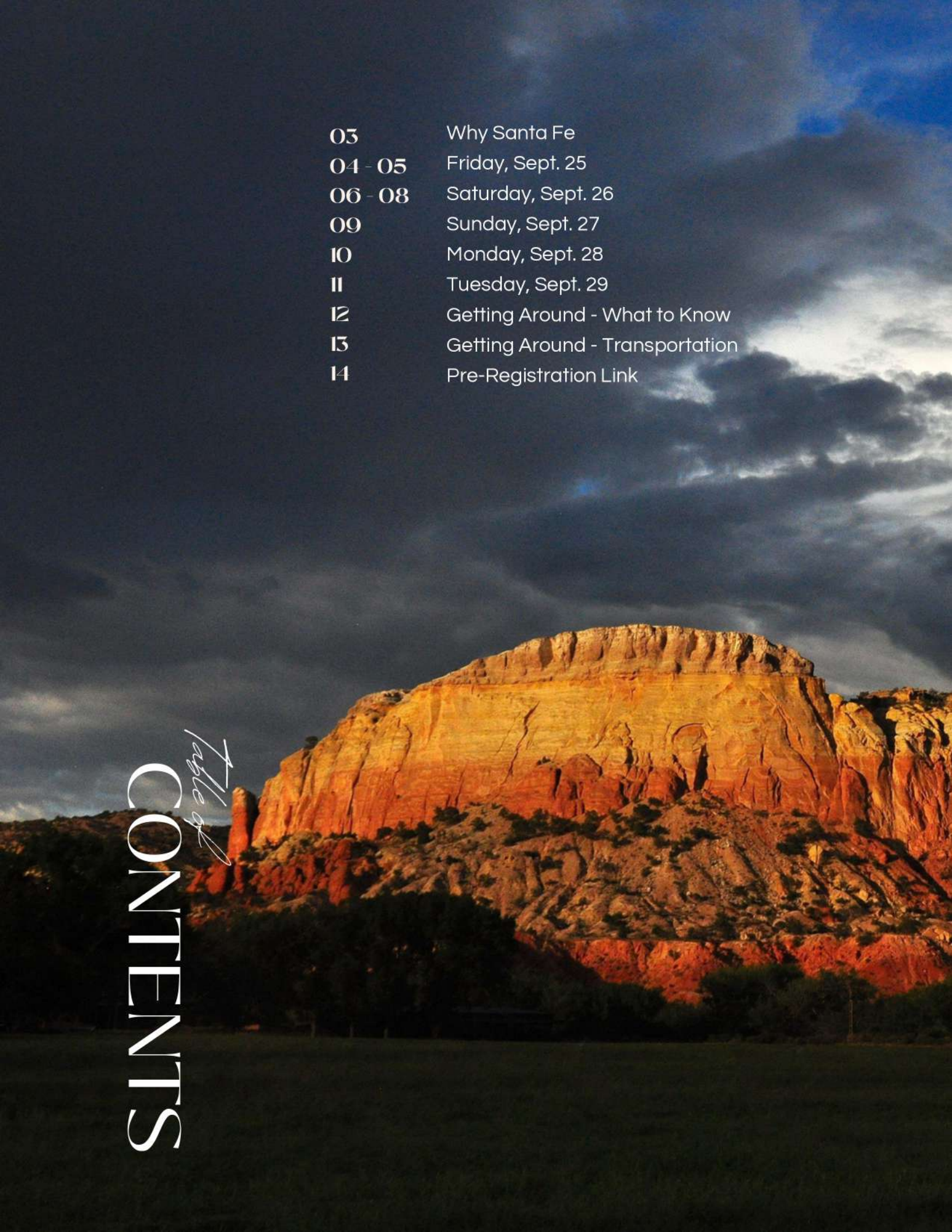
2026 FALL MEETING
SANTA FE, NEW MEXICO
SEPT. 25 - 30, 2026

WWW.TEXASSOCIETYOFMEDICINE.ORG

03	Why Santa Fe
04 - 05	Friday, Sept. 25
06 - 08	Saturday, Sept. 26
09	Sunday, Sept. 27
10	Monday, Sept. 28
11	Tuesday, Sept. 29
12	Getting Around - What to Know
13	Getting Around - Transportation
14	Pre-Registration Link

CONTENTS

Table of Contents



Why SANTA FE



Santa Fe is a destination best experienced, not simply visited. Rich in history, culture, art, and natural beauty, it has long been a place where creativity, community, and tradition come together in extraordinary ways.

While the TSM Fall Meeting provides outstanding educational programming and opportunities for professional exchange, the experience extends far beyond the meeting room. As part of the 2026 Fall Meeting, members and guests are invited to explore the spirit of Santa Fe through a carefully curated collection of excursions and special events designed to complement the educational program and create meaningful shared experiences.

From iconic landscapes and renowned galleries to celebrated restaurants and cultural landmarks, these activities offer opportunities to discover the best of Northern New Mexico while connecting with friends, colleagues, and fellow members of the TSM community.



Art. Culture. Cuisine. Discovery.



Join us on
FRI., SEPT. 25
AM

AM ACTIVITY: Private Georgia O'Keeffe Museum Tour, Downtown Walking Tour and Lunch at Santacafé

(<https://www.okeeffemuseum.org/>) (<https://www.santacafe.com/>)

Experience the art, history, and charm of Santa Fe through a specially curated excursion designed exclusively for TSM attendees and guests. Enjoy a private docent-led tour of the renowned Georgia O'Keeffe Museum, offering an intimate look at the life, work, and legacy of one of America's most influential artists.

Following the museum visit, explore the heart of historic downtown Santa Fe on a guided walking tour featuring the city's rich cultural heritage, distinctive architecture, and vibrant traditions. The experience concludes with lunch at the celebrated Santacafé, one of Santa Fe's most beloved dining destinations.

TENTATIVE SCHEDULE:

- 8:45am Depart hotel, walking with guides, to the museum
- 9:00am Arrive museum, private tour
- 10:00am Tour finishes, museum opens, free time for gift shop
- 10:15am Depart museum for Downtown Santa Fe Walking Tour (guided)
- 12:00pm Lunch at Santacafé
- 1:30pm Estimated finish time, guests depart when ready

Exact times subject to slight adjustment.

COST PER PERSON: \$190

{Includes guides, private museum tour, lunch (table appetizers, choice of entrée and dessert) and all gratuities.}

Art. Culture. Cuisine. Discovery.



FRI., SEPT. 25
PM

PM ACTIVITY: Canyon Road Stroll with Gallery Reception and Dinner at The Compound Restaurant (<https://compoundrestaurant.com/>)

Taking a stroll down Canyon Road is one of the most iconic experiences in Santa Fe, New Mexico. This picturesque, half-mile historic stretch features over 100 galleries, boutiques, and restaurants nestled inside authentic adobe buildings and lush sculpture gardens.

Along our Canyon Road stroll, stop for a private Gallery Reception with TSM friends and colleagues. Round out the evening with a private dinner at The Compound Restaurant – home and creation of Mark Kiffin; a James Beard award Winning Chef, Best of the Southwest! The Compound is a cornerstone of the culinary landscape in Santa Fe, renowned for its distinctive style and elegance.

TENTATIVE SCHEDULE:

4:00pm	Guests depart hotel with guides
4:15pm	Take a Canyon Road Stroll in beautiful Santa Fe Stop for a Private Gallery TSM Reception
6:30pm	Dinner at The Compound
8:30pm	Estimated end time, guests walk back on own or Uber

Exact times subject to slight adjustment.

COST PER PERSON: \$395

{Includes guides, gallery reception (with charcuterie, specialty cocktail, white wine and sparkling water), dinner (3-course, dessert and \$50pp hosted beverages), with all service fees and gratuities.}

Art. Culture. Cuisine. Discovery.



Join us on

SAT., SEPT. 26
 AM

AM ACTIVITY: Native Flavors of the Southwest: A Santa Fe Wine & Chile Fest Experience **MUST RSVP BY JUNE 15 TO GUARANTEE**
 (<https://santafeschoolofcooking.com/>)

Discover the rich culinary heritage of the Southwest through one of the Santa Fe Wine & Chile Fiesta's most distinctive and sought-after experiences. Hosted at the renowned Santa Fe School of Cooking, this immersive class is led by James Beard Award-winning chef Dr. Lois Ellen Frank and acclaimed Diné chef Walter Whitewater, two of the nation's foremost experts on Native American cuisine.

More than a cooking class, this experience offers a fascinating exploration of the ingredients, techniques, and traditions that have shaped the foods of the Southwest for centuries. Guests will learn about indigenous ingredients such as blue corn, hominy, squash, and chiles while discovering the cultural stories and history behind each dish.

Combining demonstration, hands-on participation, and tasting opportunities, the class culminates in a shared meal featuring authentic Native American flavors. From blue corn calabacitas and hominy stews to traditional tamales with red and green chile sauces, participants will enjoy a culinary experience that is both educational and delicious.

Exclusive to the Santa Fe Wine & Chile Fiesta, this unique program offers an opportunity to experience the region's culture through one of its most enduring traditions: food.

TENTATIVE SCHEDULE:

9:00am Guests depart hotel
 9:30am – 11am Enjoy the Santa Fe Native Cooking Class Experience

COST PER PERSON: \$165

(Includes entrance to Santa Fe Wine & Chile's "Native Cooking Class" at the Santa Fe School of Cooking, escort to school and all gratuities)

Art. Culture. Cuisine. Discovery.



SAT., SEPT. 26
PM

PM ACTIVITY: VIP Entrance to
THE SANTA FE WINE & CHILE
FIESTA'S "GRAND TASTING"

MUST RSVP BY JUNE 29 TO SECURE VIP ENTRY.

[\(https://santafewineandchile.org/\)](https://santafewineandchile.org/)

THE SIGNATURE EVENT OF SANTA FE WINE & CHILE FIESTA

For more than three decades, the Santa Fe Wine & Chile Fiesta has celebrated the extraordinary culinary culture of Northern New Mexico. What began as a small gathering of local restaurants and wineries has evolved into one of the Southwest's most anticipated food and wine festivals, attracting thousands of culinary enthusiasts from across the country each year.

The Grand Tasting is the centerpiece of the Fiesta — an afternoon devoted to exceptional wines, celebrated chefs, and the distinctive flavors that have made Santa Fe one of America's most beloved culinary destinations.

Featuring more than 65 acclaimed restaurants and 90 world-class wineries, the Grand Tasting offers guests an unparalleled opportunity to sample, sip, and explore at their own pace while enjoying the beauty and energy of Santa Fe.

Continued on page 2...

Art. Culture. Cuisine. Discovery.

EXPERIENCE THE GRAND TASTING

Saturday, September 26



EXCLUSIVE VIP ACCESS

As a VIP guest, you'll enjoy early entry beginning at 11:15 a.m., providing the opportunity to explore the tasting grounds before general admission and enjoy a more relaxed, intimate experience.

WHAT AWAITS YOU

World-Class Wines

Meet winery representatives from around the globe and sample an extraordinary selection of vintages thoughtfully curated by the Santa Fe Wine & Chile Fiesta team.

Santa Fe's Culinary Stars

From James Beard Award-winning chefs to beloved local restaurants, discover the creativity, talent, and flavors that have made Santa Fe one of the nation's premier culinary destinations.

A Celebration of Place

Set against the backdrop of New Mexico's stunning mountain landscapes, the Grand Tasting is more than a food and wine event—it's a celebration of the culture, hospitality, and spirit that define Santa Fe.

Included with VIP Admission

- ✓ Early VIP Entry
- ✓ Grand Tasting Admission
- ✓ Official Santa Fe Wine & Chile Fiesta Swag Bag
- ✓ Commemorative Poster Featuring the 2026 Fiesta Artwork Road Trip by acclaimed artist Jim Jennings (while supplies last.)

TENTATIVE SCHEDULE:

- | | |
|---------|---|
| 11:00am | Depart walking from Loretto or cooking school |
| 11:15am | VIP entrance to Fort Marcy Field and the Festival |
| 3:00pm | End of festival, guests walk back to hotel on own |

COST PER PERSON: \$350

(Includes escorts from cooking school and/or hotel and entrance to Santa Fe Wine & Chile's "Grand Tasting".)



Featured poster of the 2026 Wine & Chile Fiesta "Road Trip", by artist Jim Jennings. Get YOURS and join us at the Wine & Chile Festival!



Join us on

SUN, SEPT. 27
FULL DAY

FULL-DAY ACTIVITY: Bandelier National Monument, Los Alamos Tour, and Bradbury Science Museum, with Lunch at Pajarito Brewpub

(<https://www.nps.gov/band/index.htm>) (<https://www.lanl.gov/engage/bradbury>)
(<https://www.pajaritobrewpubandgrill.com/>)

Step into a day of discovery as we explore two of Northern New Mexico's most fascinating destinations. Our journey begins at Bandelier National Monument, where dramatic canyon landscapes, ancient cliff dwellings, and centuries-old petroglyphs offer a glimpse into the lives of the Ancestral Pueblo people who once called this remarkable region home.

From there, we'll travel to Los Alamos, a community renowned for its role in science, innovation, and the Manhattan Project. Explore the acclaimed Bradbury Science Museum, where interactive exhibits bring history, discovery, and technology to life. Along the way, enjoy the stunning mountain scenery of Northern New Mexico before gathering for lunch at local favorite Pajarito Brewpub.

Blending history, culture, science, and spectacular landscapes, this memorable excursion showcases the rich stories and unique character that make New Mexico unlike anywhere else.

TENTATIVE SCHEDULE:

- 8:00am Depart hotel in busses with guides
- 9:00am Arrive Bandelier
- 11:00am Depart for lunch
- 11:30am Lunch at Pajarito Brewpub
- 1:30pm Depart for Los Alamos
Tour Bradbury Science Museum, Bathtub Row
- 3:00pm Depart for Santa Fe
- 4:00pm Estimated return to hotel

Exact times subject to slight adjustment.

COST PER PERSON: \$200

(Price includes transportation, guides, Bandelier entrance, science museum entry, lunch (1 main menu item and 1 beverage, including beer) and all gratuities.)

Art. Culture. Cuisine. Discovery.



Join us on

MON., SEPT. 28
*****FULL DAY*****

FULL-DAY ACTIVITY - for Spouses/Partners & Guests: Abiquiu & Ghost Ranch Landscape Tour, with Lunch at Abiquiu Inn (<https://www.ghost ranch.org/>) (<https://www.abiquiuinn.com/cafe>)

Experience the landscapes that inspired one of America's most celebrated artists on this unforgettable journey through the heart of Northern New Mexico. Travel to the enchanting village of Abiquiú and the spectacular red rock formations of Ghost Ranch, where Georgia O'Keeffe found the colors, shapes, and vistas that would define much of her iconic work.

Along the way, discover dramatic cliffs, sweeping desert panoramas, and the rugged beauty that has captivated artists, writers, photographers, and travelers for generations. Knowledgeable local guides will share the rich history, culture, and geology of the region, offering a deeper appreciation for this extraordinary corner of the Southwest.

The experience includes time to explore the stunning landscapes of Ghost Ranch and the surrounding Abiquiú area before gathering for lunch at the charming Abiquiú Inn, a beloved local destination known for its New Mexican hospitality and regional cuisine.

Whether you're an art enthusiast, nature lover, photographer, or simply looking to experience the beauty that inspired Georgia O'Keeffe, this excursion promises a memorable day filled with breathtaking scenery, fascinating stories, and the unique spirit of New Mexico.

TENTATIVE SCHEDULE:

- 8:00am Depart hotel in bus with guide
- 9:00am Arrive Abiquiu OK Welcome Center
- 9:30am Depart for Ghost Ranch
- 10:00am Ghost Ranch Landscape Tour
- 12:00pm Depart for lunch in Abiquiu
- 12:30pm Lunch at Abiquiu Inn
- 2:00pm Depart for Santa Fe
- 3:00pm Estimated return to hotel

Exact times subject to slight adjustment.

COST PER PERSON: \$250

(Includes transportation via minicoach, guide, entrance to Ghost Ranch and Landscape Tour, lunch (regular menu item and 1 beverage), and all gratuities.)

Art. Culture. Cuisine. Discovery.



Join us on
TUES., SEPT. 29
 *** FULL DAY ***

FULL-DAY ACTIVITY - for Spouses/Partners & Guests: Chimayo Tour, Weaver Demo and Nambe Trading Post visit with Lunch at Rancho de Chimayo

(<https://www.nambetradingpost.com/>) (<https://www.ranchodechimayo.com/>)

Discover the rich cultural heritage and artistic traditions of Northern New Mexico on this immersive excursion through one of the region's most beloved destinations. Our journey takes us to the historic village of Chimayó, renowned for its deep spiritual roots, vibrant artisan community, and centuries-old traditions.

El Santuario de Chimayó: Often called the "Lourdes of the Southwest," this 1816 National Historic Landmark is a major Catholic pilgrimage site. Visitors travel here to pray and collect "holy dirt" from a small pit in a side chapel, which is widely believed to possess curative properties.

Learn about the craftsmanship that has shaped the region during a traditional weaving demonstration, where local artisans share the techniques, history, and artistry behind one of New Mexico's most treasured cultural practices. The experience continues with a visit to the iconic Nambe Trading Post, offering an opportunity to explore authentic Native American and Southwestern art, jewelry, textiles, and handcrafted treasures.

The day concludes with lunch at the legendary Rancho de Chimayó, a James Beard Award-winning restaurant celebrated for its warm hospitality, historic setting, and authentic Northern New Mexican cuisine.

Filled with history, culture, artistry, and unforgettable flavors, this excursion offers a unique opportunity to experience the traditions and enduring spirit that make Northern New Mexico so extraordinary.

TENTATIVE SCHEDULE:

- 9:00am Depart hotel in bus with guide
- 10:00am Arrive Chimayo – tour Centinela, Santuario
- 12:00pm Lunch at Rancho de Chimayo
- 1:30pm Depart for Nambe, visit Nambe Trading Post
- 3:00pm Depart for Santa Fe
- 3:30pm Estimated return to hotel

Exact times subject to slight adjustment.

COST PER PERSON: \$200

(Includes transportation via minicoach, guide, entrance to Nambe Trading Post Museum, donation to Santuario, lunch (regular menu item and 1 beverage), and all gratuities.)

Art. Culture. Cuisine. Discovery.

GETTING AROUND IN SANTA FE

One of the many pleasures of staying at the Inn & Spa at Loretto is its exceptional location in the heart of historic Santa Fe. Many of the destinations featured in this guide—including the Plaza, Canyon Road, galleries, restaurants, shops, and several activity departure points—are within comfortable walking distance of the hotel.

Santa Fe invites exploration on foot. Along the way, you'll discover charming courtyards, shady gardens, public art, historic adobe architecture, and countless opportunities to pause, relax, and take in the unique character of the city.

Comfortable walking shoes are strongly recommended throughout your stay and are especially important for excursions such as Bandelier National Monument, where uneven terrain and moderate walking are involved.

Uber and Lyft service are available in Santa Fe; however, wait times can be longer than in larger metropolitan areas. The Inn & Spa at Loretto does not provide local shuttle service.

SANTA FE, NM
Getting Around in

AIRPORT & TRANSPORTATION INFORMATION

Depending on your departure city, flying directly into Santa Fe Regional Airport (SAF) may be a convenient option. Many attendees may also find Albuquerque International Sunport (ABQ) offers additional flight choices and competitive pricing.

For guests arriving through Albuquerque, rental cars are readily available, and the drive to Santa Fe is approximately 90 minutes through the scenic landscapes of Northern New Mexico.

INTERESTED IN AIRPORT TRANSPORTATION?
Transportation may be arranged from either SAF or ABQ to the Inn & Spa at Loretto, depending on how many TSM members are interested in this option.

If you are interested in airport transportation, please indicate your interest on the pre-registration form. Pricing will depend upon the number of participants, vehicle type, pickup locations, and final routing.

As a general guideline:

- Shared transportation from Santa Fe Regional Airport is typically the most economical option.
- Transportation from Albuquerque may range from approximately \$100 per couple in a shared Sprinter van to approximately \$295 per couple in a private sedan, depending upon participation levels and final arrangements.

Additional details and pricing will be provided once transportation needs have been assessed.

ACTIVITY SCHEDULE
 AT-A-GLANCE
 Join us in Santa Fe for the 2026 Fall Meeting

The At-a-Glance Activity Schedule is a quick review of activities that we have planned for the TSM 2026 Fall Meeting. Optional paid activities can be selected INDIVIDUALLY, based on your arrival times and preferences. We are excited to see you in Santa Fe!



FRIDAY, SEPTEMBER 25

Morning

Private Georgia O'Keeffe Museum Tour, Downtown Walking Tour & Lunch at Santacafé



Evening

Canyon Road Stroll, Private Gallery Reception & Dinner at The Compound



SATURDAY, SEPTEMBER 26

Morning

Native American Culinary Traditions Cooking Experience

Afternoon

***VIP Grand Tasting

Santa Fe Wine & Chile Fiesta***



Evening - Dinner on Your Own (If you are still hungry after Wine and Chile!)



SUNDAY, SEPTEMBER 27 - FULL DAY

Bandelier National Monument, Los Alamos & Bradbury Science Museum

Lunch at Pajarito Brewpub

Evening - 6pm: See Who's Here Reception



MONDAY, SEPTEMBER 28 - FULL DAY

Abiquiú & Ghost Ranch Landscape Tour

Lunch at Abiquiú Inn

Evening - Dinner on Your Own



TUESDAY, SEPTEMBER 29 - FULL DAY

Chimayó Tour, Weaver & Nambé Trading, with Lunch at Rancho de Chimayó

Evening - TSM Dinner Dance

WEDNESDAY, SEPTEMBER 30 -

Departure day

Plan. Get excited. See you there!

PRE-REGISTER

PRE-REGISTRATION REQUESTED

Many of Santa Fe's most popular experiences require advance ticketing, transportation coordination, and venue commitments. Several excursions—including the Santa Fe Wine & Chile Fiesta events—have limited capacity and may sell out before regular registration opens. *(Some activity deadlines for RSVP are noted in the brochure and on the form.)*

No payment is due with pre-registration. We are simply asking for your activity selections now so we can secure tickets, reserve seating, and accurately plan group experiences.

If you do not participate in pre-registration, we cannot guarantee that tickets and/or seating will still be available when regular registration opens. Regular registration will open soon.

2026 Fall Meeting Registration Fees Will Be:

- Active Members: \$300
- Emeritus Members: \$600
- Non-Members: \$650

(Additional Dinner Dance Guests for Non-Members: \$200)

Registration includes the clinical program, See Who's Here Reception, and Dinner Dance. One spouse, partner, or guest is included with Active and Emeritus Member registration.

The See Who's Here Reception is open to all attendees and their guests.

Help us secure Santa Fe's most sought-after experiences by submitting your pre-registration as soon as possible.

EXPERIENCE SANTA FE
CURATED EXCURSIONS
& SPECIAL EVENTS

Reserve Your Santa Fe Experience!

P.O. Box 170897, Austin, TX 78717
www.texassocietyofmedicine.org
laura@texassocietyofmedicine.org
[@texassocietyofmedicine](https://www.instagram.com/texassocietyofmedicine)



SCAN THE CODE TO GO TO THE
PRE-REGISTRATION FORM